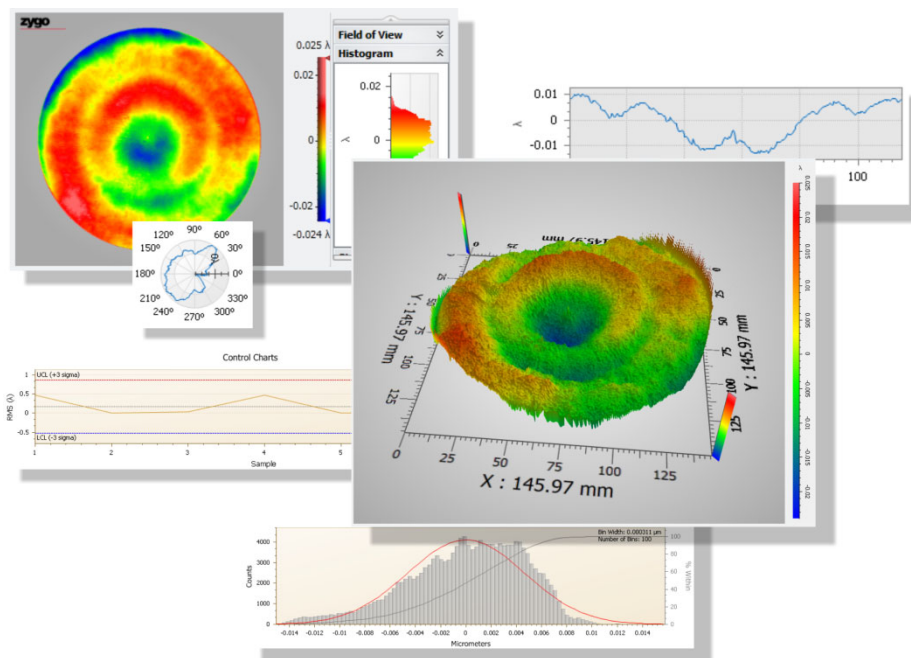


ZYGO Mx™ Software

Mx is powerful, feature rich metrology software designed for use with ZYGO interferometers. It integrates a streamlined graphical interface with an array of measurement tools and data analysis functions.



System Requirements

- Microsoft® Windows 7/10 64-Bit.
- Multi-core processor (quad-core processor minimum).
- 16 GB RAM or greater.
- Dedicated graphics card that supports OpenGL 1.5 (or later) with 256 MB RAM (recommended).
- Color monitor capable of displaying true color (32-bit).

Installing Mx (non instrument)

Double click the Mx64Install_vX.X.X.exe file to install the software. Select “software only” version. Follow any on-screen prompts.

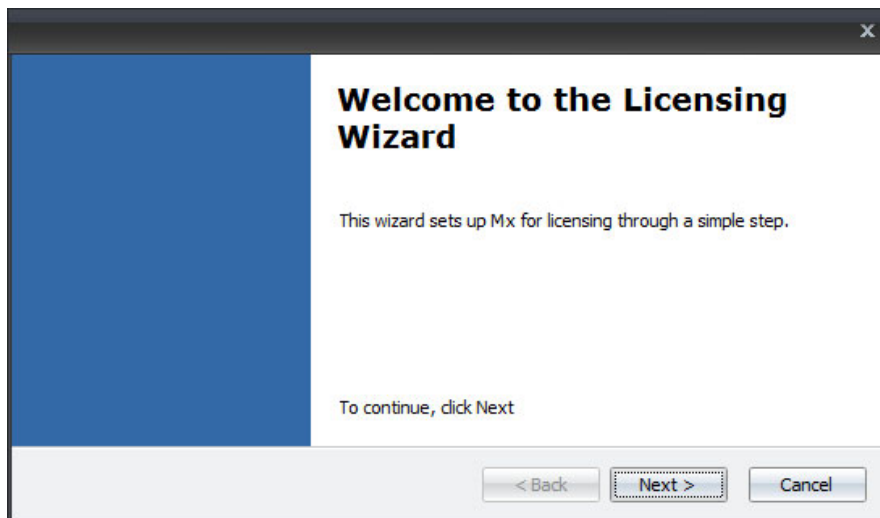
Mx is factory installed for new instruments.

Licensing Mx

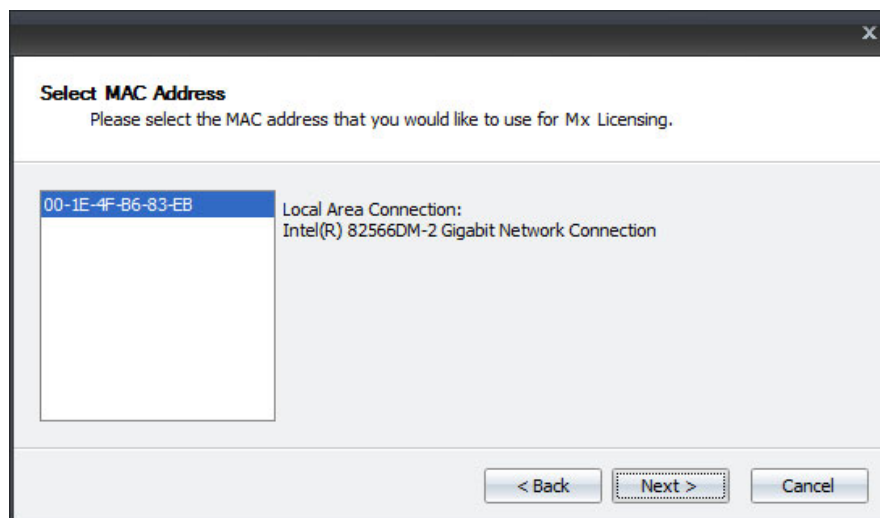
The software must be licensed or activated to be functional. Software licenses are linked to the Hardware ID of the computer.

1. Double click the Mx icon on the desktop.

- On the Help menu, select Licensing. The Licensing Wizard opens the first time Licensing is selected. Click Next.



- Select the MAC Address and click Next. Some computers may display multiple MAC addresses; if this is the case, choose the address associated with the Local Area Connection.



The MAC address is used as the Hardware ID. The MAC (Media Access Control) address is a unique identifier assigned to the network adapters by the computer manufacturer for identification.

- Enter the Start Date, End Date, and Key into the appropriate fields.

License Keys						
	Hardware ID	Option	Start Date	End Date	Key	Valid
>	0730052175	Mx	7/31/2010	7/31/2030	2494-9028-6481-0000	<input checked="" type="checkbox"/>
	0730052175	Instrument	1/1/2009	1/1/2030	0000-0000-0000-0000	<input type="checkbox"/>
	0730052175	DynaPhase	1/1/2009	1/1/2030	0000-0000-0000-0000	<input type="checkbox"/>
	0730052175	QPSI	1/1/2009	1/1/2030	0000-0000-0000-0000	<input type="checkbox"/>



If you do not have license codes, copy the Hardware ID and contact ZYGO. You can use the clipboard to copy and paste codes into the applicable fields.

- After the values are entered, they are verified. A check in the Valid check box indicates the dates and key codes are valid.
- Click OK to close the License Keys dialog.

Starting Mx

1. Turn on the computer and instrument. When the log on message appears, press Ctrl+Alt+Del to log on.
2. Choose zygo as the user. Do not enter a password. Press Enter.
3. Double click the Mx icon on the desktop.



Loading an Application

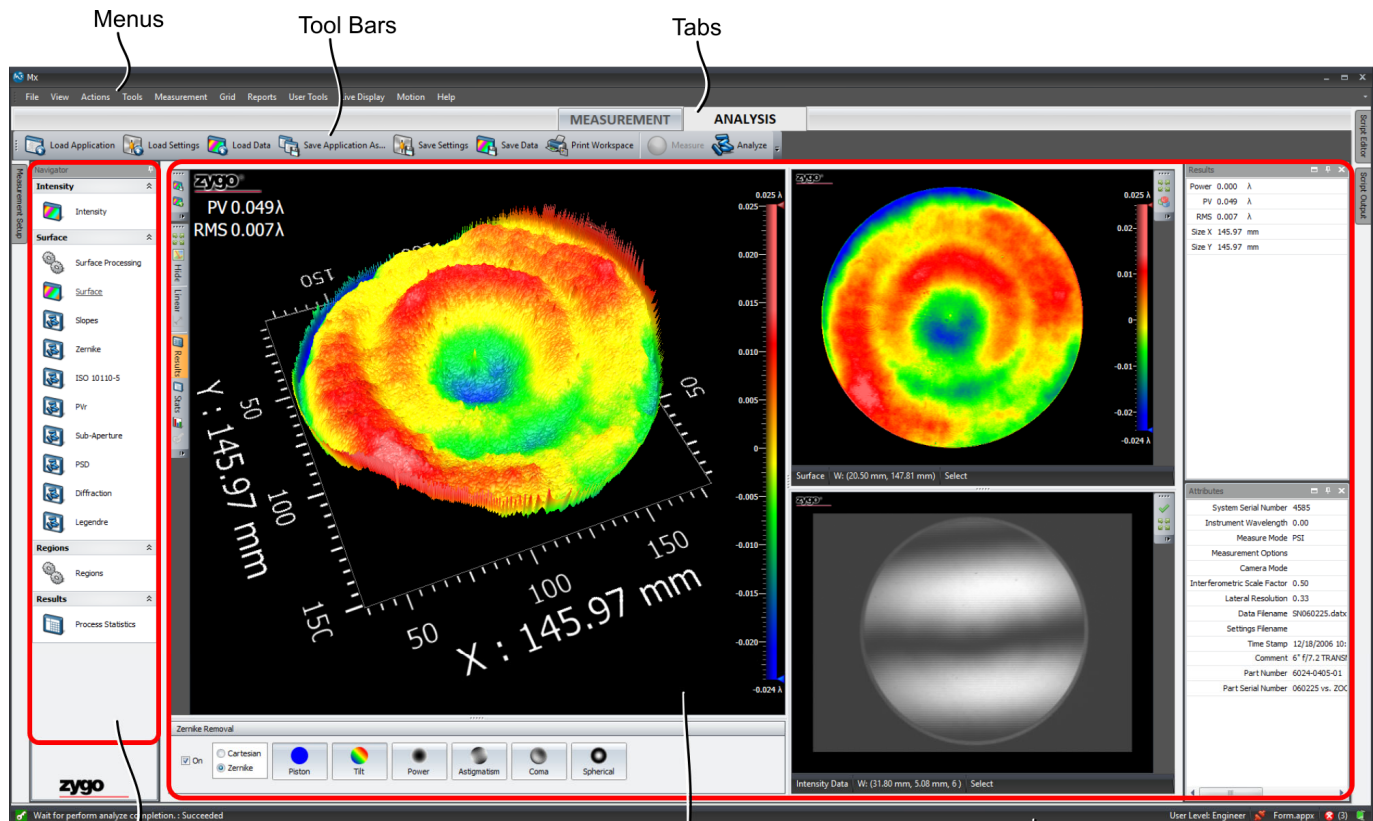
An application is a predefined configuration of measurement and analysis tools.

1. On the File menu, select Load Application.
2. In the Open dialog, select a file and click Open.



The standard application for laser interferometers is Form.appx. The default application for optical profilers is Micro.appx or MicroLite.appx.

The Mx Interface



Navigator
Shows data analysis flow and provides access to tools and views; click arrows to expand/collapse.

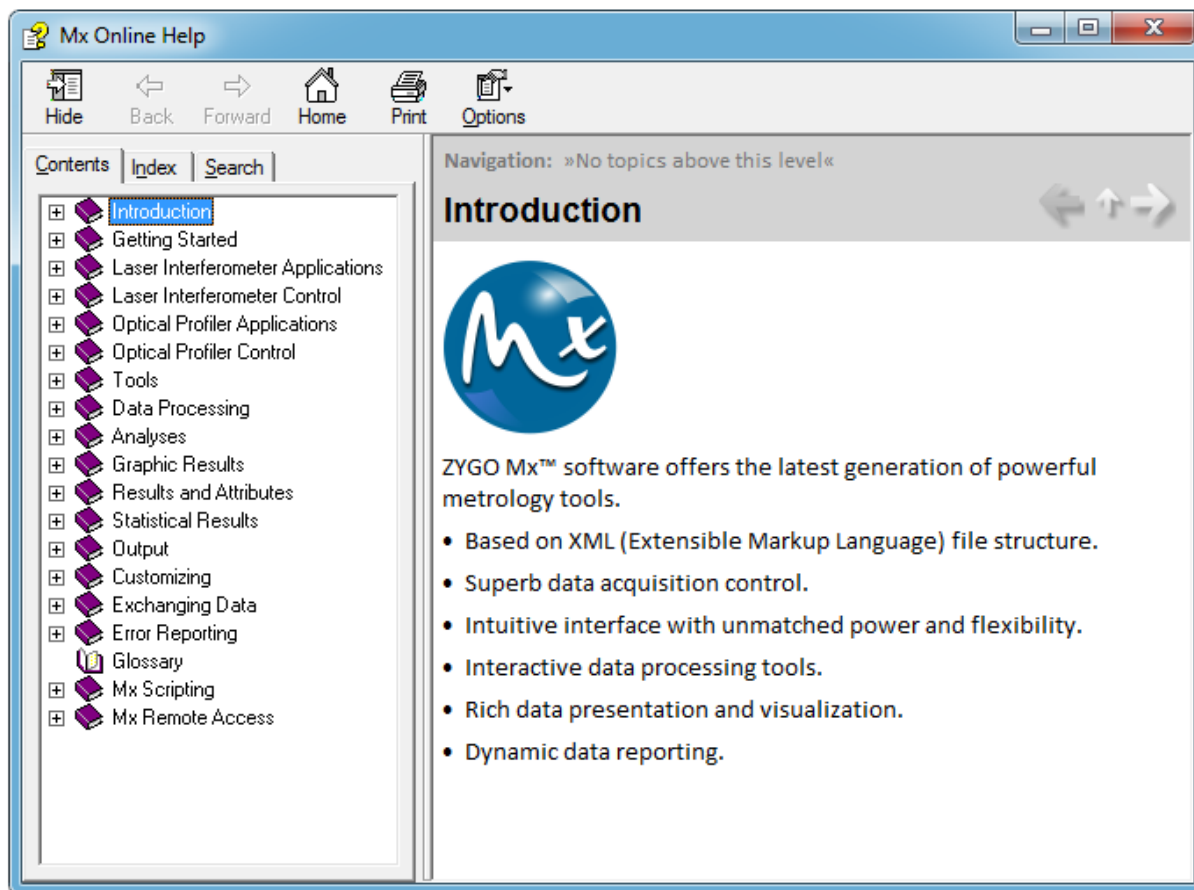
Workspace
View and interact with measurement results

Status Bar

Learning About Mx

Access the online help to learn more about Mx.

1. On the Mx Help menu, select Zygo Mx Help.
2. To look through the help like a manual, browse the Contents panel.
3. Use the Index tab to look for specific items by name; type in the keyword you are looking for.
4. Use the Search tab to search for all occurrences of a particular word or phrase; type in the word you are looking for, and press Enter.



Customer Support

For help within North America, please use the listed phone numbers.

For help in other countries, please contact your local Zygo Corporation representative.

Before contacting us, please have the instrument model, serial number, and the software version.



Phone:
860-347-8506
or 800-994-6669



See www.zygo.com
for a complete list
of locations.